



Stretta™

DISPLAY REBATE PROGRAM



Manhattan Pearl



White Marble

Ordering your Display Tops is Simple as 1, 2, 3!

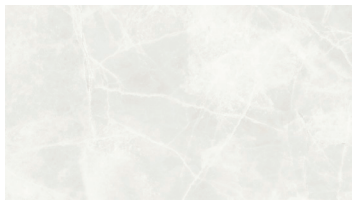
1. Order Stretta tops then complete the stretta display rebate form
2. Install the Stretta display tops within 60 days
3. Customer submits photo to VT Territory Sales Manager

DISPLAY TOPS SIZES:

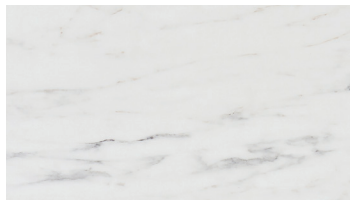
4 ft. Straight: 48" x 25-1/2" x 1-1/8"
(Includes Endcap)

6 ft. Londoner A: 72" x 25-1/2" x 1-1/8"

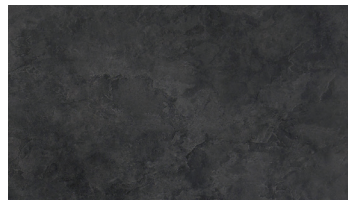
6 ft. Londoner B: 72" x 25-1/2" x 1-1/8"
(Includes Endcap and Installation Kit)



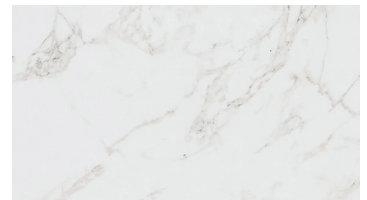
MANHATTAN PEARL



ALABASTER SLATE



URBAN GRAPHITE



WHITE MARBLE

REBATE PROGRAM DETAILS

- Customers can order up to 2 Stretta display tops
- Customer will initially be charged full price, no discount applied
- Full rebate for display tops will be applied if the following conditions are met:
 - Shelves are installed within 60 Days of invoice date
 - Customer submits photo and Display Rebate Form of shelving displays to their VT Territory Sales Manager



Company _____

Address _____

City _____ State _____ Zip _____

COUNTERTOP OPTIONS:

Customers can order up to 2 Stretta display tops

4 ft. Straight countertop (48" x 25-1/2" x 1-1/8") Quantity: Color:

6 ft. Londoner A countertop (72" x 25-1/2" x 1-1/8") Quantity: Color:

6 ft. Londoner B countertop (72" x 25-1/2" x 1-1/8") Quantity: Color:

VT Order or PO # _____

DISPLAY LOCATION:

Company _____

Address _____

City _____ State _____ Zip _____

Phone # _____

Date Installed _____

Verified by _____ (VT Sales Rep)

Please complete form and submit to:

VT Georgia	Fax 712-368-2999	VTGAorders@vtindustries.com
VT Iowa	Fax 712-368-4188	VTIAorders@vtindustries.com
VT Oregon	Fax 712-368-2947	VTORorders@vtindustries.com
VT Texas	Fax 712-368-2944	VTTXorders@vtindustries.com

