

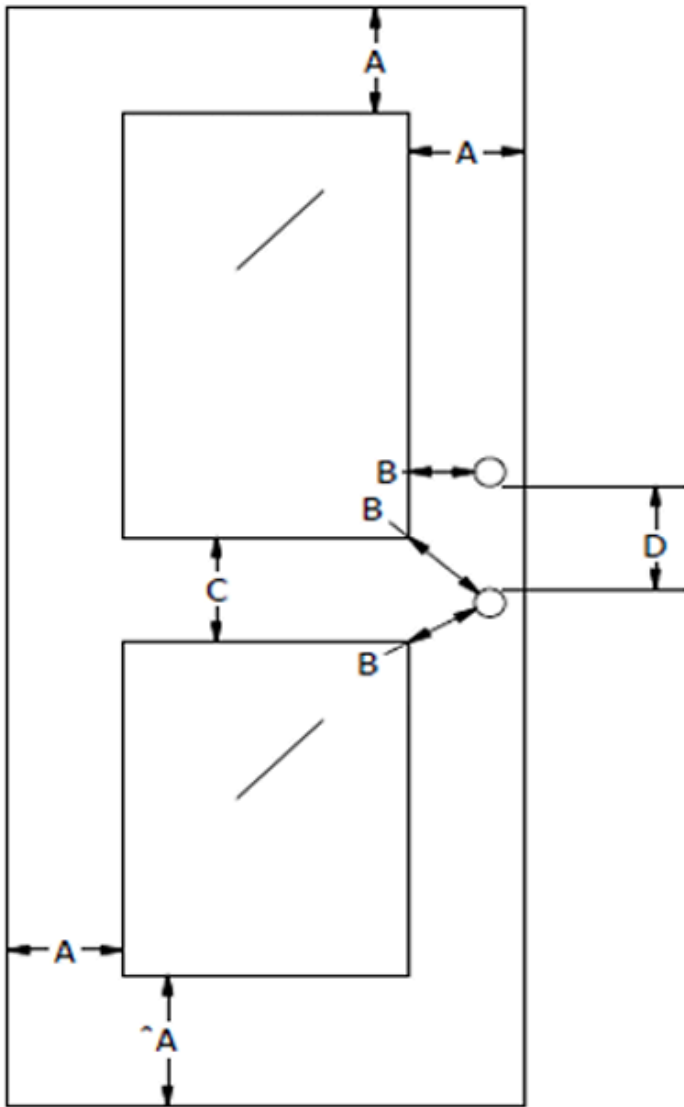
LITE / LOCK CUTOUT MARGINS ON FLUSH DOORS

CORE TYPE	FIRE RATING	(A) MINIMUM STILE OR RAIL WIDTH DIMENSION	(B) MINIMUM LITE TO LOCK DIMENSION	(C) MINIMUM LITE TO LITE DIMENSION	(D) MINIMUM LOCK TO LOCK DIMENSION
PARTICLEBOARD CORE (PC)	Non-Rated / 20-Min	5"	3-5/16"	3-5/16"	3-5/16"
AGRIFIBER CORE (WSPC)	Non-Rated / 20-Min	4"	3-5/16"	3-5/16"	3-5/16"
STRUCTURAL COMPOSITE LUMBER CORE (SCLC)	Non-Rated	3"	1-1/2"	1-1/2"	1-1/2"
STRUCTURAL COMPOSITE LUMBER CORE (SCLC)	20-Min	5"	1-1/2"	1-1/2"	1-1/2"
AGRIFIBER CORE (WSPC)	45-Min	4"	4"	4"	4"
STRUCTURAL COMPOSITE LUMBER CORE (SCLC) - HOLSTEIN FACILITY	45-Min	5"	5"	5"	5"
FIRE COMPOSITE CORE (FD) - NEENAH FACILITY	45-60-90-Min	5"	3-1/2"	5"	3-1/2"
FIRE COMPOSITE CORE (FD) - HOLSTEIN FACILITY	45-60-90-Min	5"	5"	5"	5"
PARTICLEBOARD CORE (PC) - NEENAH FACILITY	45-Min	5-1/2"	5-1/2"	5-1/2"	5-1/2"
ACOUSTIC CORE (STC)	Non-Rated / 20-Min	5"	3-5/16"	3-5/16"	3-5/16"
ACOUSTIC CORE (STC)	45-Min	5"	5"	5"	5"
ACOUSTIC CORE (STC)	60-Min	5"	5"	5"	5"
BULLET RESISTANT CORE (BR)	Non-Rated	5"	1-1/2"	1-1/2"	1-1/2"

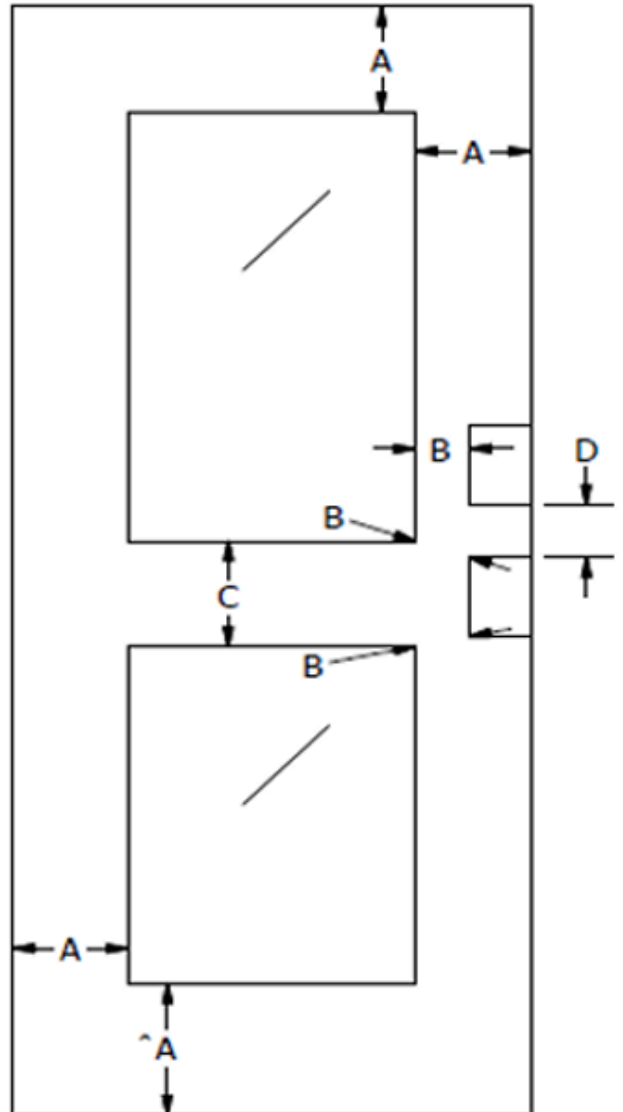
1 Allowed stile & rail widths subject to change based on actual hardware preps required.

*Doors with stile & rail dimensions less than 5" will be exempt from warranty and subject further VT engineering review.

LITE / LOCK CUTOUT MARGINS ON FLUSH DOORS



CYLINDRICAL LOCKS



MORTISE LOCKS