

## FLUSH BOLTS

VT Industries has approval prep listed and approved extension flush bolts, corner mounted flush bolts, and surface flush bolts in doors rated 20-90 minutes. This requires top and bottom flush bolts. Fire pins/auxiliary fire latches are not allowed with a top flush bolt only.

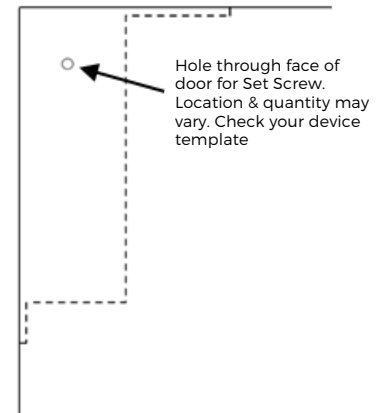
### **Automatic Flush Bolts:**

Automatic flush bolt preps in the inactive leaf of a pair of doors require additional stabilization to eliminate the possibility of flaring at the top and bottom corners of the meeting edge. This is not considered a defect in workmanship or material, but a natural occurrence when core is removed.

To prevent this, VT recommends one of the following:

- As a standard, VT recommends a stainless-steel clip that can be slipped onto the top or ease of the door, secured in place with adhesive
- Metal channel or astragal on the edge to prevent flaring
- Drill holes through the face of the door for set screws that will screw into holes on the side of the flush bolt and pull the prep back together (See drawing to right)

To avoid the possibility of flaring, the use of an extension flush bolt should be considered.



Doors with automatic flush bolt pockets will have protective blocks inserted. These will help to prevent damage associated with improperly using pockets as handles on jobsites. Protective blocking will also provide added support to the pocket cutouts, helping prevent shipping damage.



## FLUSH BOLTS

---

### **Manual Extension Flush Bolts:**

Extension flush bolts can have up to a maximum of 36" extensions on doors 20-90-minute positive pressure installations. Although the hardware manufacturer's listings may note "for metal doors", VT has approval in our procedures which supersedes the hardware listings of most metal extension flush bolts.

### **Meeting Edge of Inactive Leaf in Pairs with Flush Bolts:**

The standard for VT doors will be for the meeting edge on the inactive leaf in pairs with flush bolts to be square, where hardware allows, instead of the meeting edges on both doors beveled. Surface hardware, such as edge guards, should be ordered as square to match.

Square edge construction is due to the following reasons:

- The faceplate on flush bolts is not adjustable (they do not swivel) and are designed for square-edged doors
- The flush bolt will function properly, and the prep will have a better appearance
- The gap between the doors on the narrow side (stop face) of the doors will be reduced for greater security

