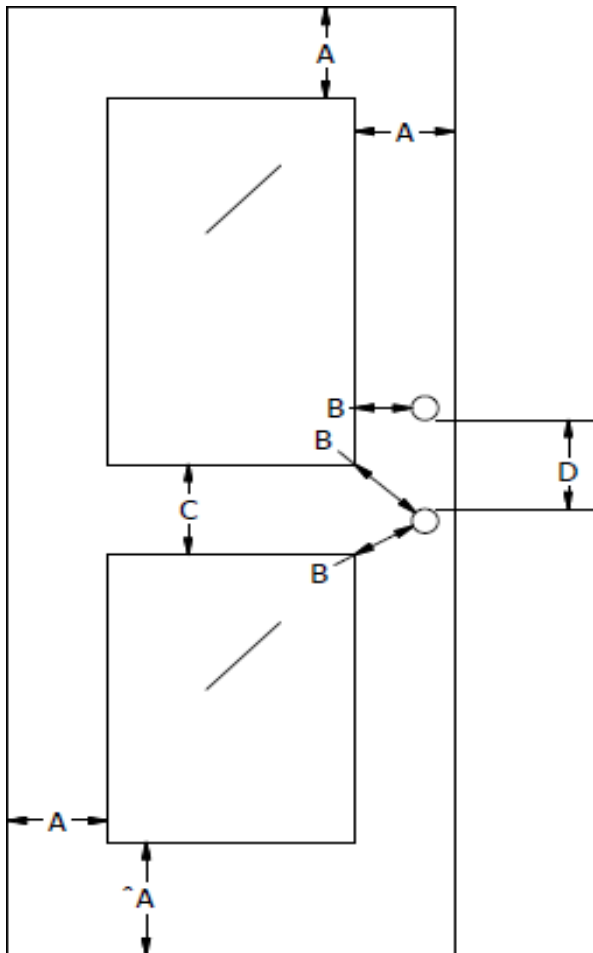


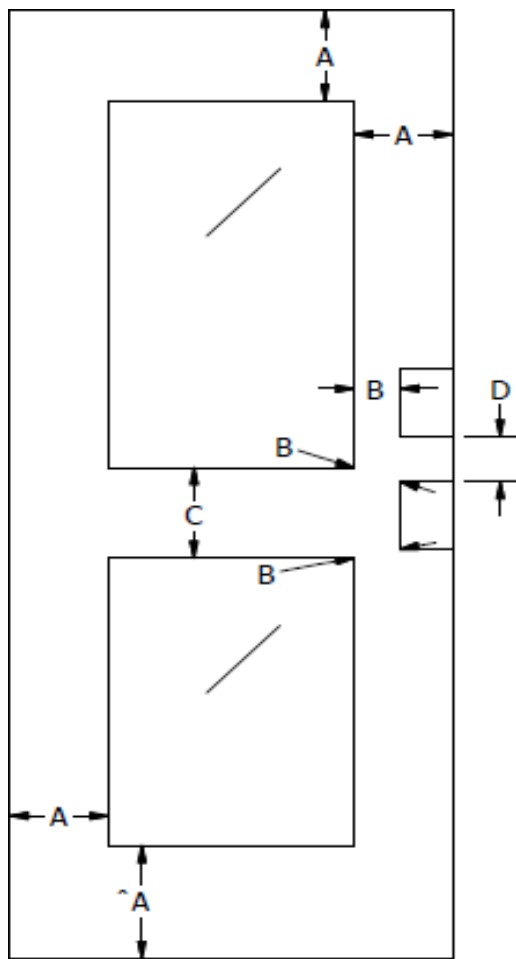
LITE / LOCK CONFLICT CHART FOR VT FLUSH DOORS

(ALL DIMENSIONS TO CUTOUT)



CYLINDRICAL LOCKS

^ADA TYPICALLY RECOMMENDS MINIMUM 10" AFF TO VISIBLE TOP OF BOTTOM RAIL



MORTISE LOCKS

		(A) MINIMUM STILE OR RAIL WIDTH DIMENSION	(B) MINIMUM LITE TO LOCK DIMENSION	(C) MINIMUM LITE TO LITE DIMENSION	(D) MINIMUM LOCK TO LOCK DIMENSION	* RECOMMENDED MINIMUM STILE WIDTH WITH GOV'T 161 CYL LOCK	* RECOMMENDED MINIMUM STILE WIDTH WITH GOV'T 86 MORTISE LOCK
PARTICLE CORE STAVE CORE AGRIFIBER CORE	NON-RATED / 20 MIN	5	3 5/16	3 5/16	3 5/16	7 1/4	8
TIMBERSTRAND CORE	NON-RATED / 20 MIN	5	1 1/2	1 1/2	1 1/2	5 1/2	6
AGRIFIBER CORE TIMBERSTRAND CORE	45 MIN	5	5	5	5	9	9 1/2
MINERAL CORE FIRE CORE	45/60/90 MIN	5	5	5	5	9	9 1/2

* RECOMMENDED STILE WIDTHS SUBJECT TO CHANGE BASED ON ACTUAL LOCK PREPS REQUIRED

VT Industries, Inc. | 1000 Industrial Park | Holstein, IA 51025 | United States

Phone: 712.368.4381 | Toll Free: 800.827.1615 | Fax: 712.368.4111

vtindustries.com